

Welcome to

THE RETINA INSTITUTE



INTRODUCTION ►

This brochure will introduce you to The Retina Institute and answer some of your questions. We invite you to read through it carefully and save it for future reference. We encourage you to discuss any aspect of your eye care with us.

The Retina Institute specializes in diseases and surgery of the retina, vitreous, and macula. With more than 50 years of experience, the practice that forms the core of The Retina Institute is recognized nationally for its high standard of patient care and for its contributions to diagnosis, surgery and treatment.

OUR SPECIALTY ►

Many ocular diseases involve the retina, which may cause or contribute to visual loss. Vision loss may be associated with nearsightedness, injury, diabetes, and aging. In some patients, holes or tears may develop in the retina leading to a retinal detachment.

Major advances in the last 20 years have resulted in successful treatment options for many retinal diseases.

With a careful medical history, a detailed examination of the eye and special testing, the cause of the problem can be determined.

Treatment for diseases of the retina and vitreous may include drops or pills, injections into the eye, laser or freezing treatments. More extensive surgery may be performed in a hospital or out-patient operating room. Most surgeries are done on an out-patient basis and rarely require hospitalization.

HOSPITALIZATION ►

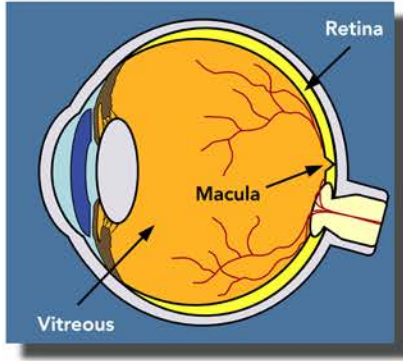
If you are being seen as an emergency patient, it is suggested that you bring an overnight bag with you. Please bring all current medications. Occasionally hospitalization and testing are necessary. If intervention is needed, a consultation with an internist will be obtained. All surgical fees will be discussed with you by our admissions coordinator.

ANATOMY OF THE EYE ▶

The **retina** is the nerve tissue that lines the inner wall of the back half of the eye and receives the images focused on it. You might compare it to the film in a camera.

The **macula** is the central portion of the retina which is essential for clear, sharp vision.

The **vitreous** is a transparent jelly located behind the lens and in the front of the retina.



APPOINTMENTS & EXAMS ▶

Appointments may be scheduled at any of our six conveniently located offices identified in this brochure. Our physicians also travel to locations in Alton, Effingham, and Quincy in Illinois, and Columbia, Farmington, Hazelwood, Shrewsbury and Hannibal in Missouri.

All appointments begin with a technician, who will perform the initial testing. There will be a period of time necessary for this evaluation and subsequent dilation of your eyes prior to examination by the physician. Your appointment may take two to four hours for an initial visit, and one-and-a-half to three hours for a return appointment. Your visit may take much longer if extensive tests are required or you have a complex problem.

Both eyes will usually be dilated. Wearing sunglasses will make you more comfortable when you leave the office. We recommend having someone drive you home from your appointment. If you are seen as an emergency, you will be worked into the office schedule and will be examined as quickly as possible.



OUR PHYSICIANS ▶

Kevin J. Blinder, MD

Dr. Blinder received his medical degree from the University of Missouri, Kansas City. He completed his ophthalmology residency at the University of Missouri, Columbia, and a vitreoretinal fellowship at the Louisiana State University Eye Center in New Orleans. Dr. Blinder is certified by the American Board of Ophthalmology.



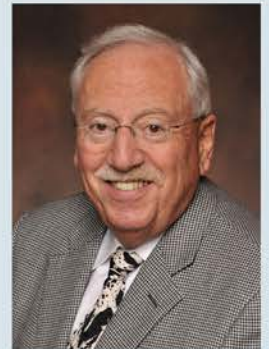
Nicholas E. Engelbrecht, MD

Dr. Engelbrecht received his medical degree from the University of Kansas School of Medicine. He completed his ophthalmology residency at Wake Forest University School of Medicine and a vitreoretinal fellowship at Emory University in Atlanta. Dr. Engelbrecht is certified by the American Board of Ophthalmology.



M. Gilbert Grand, MD

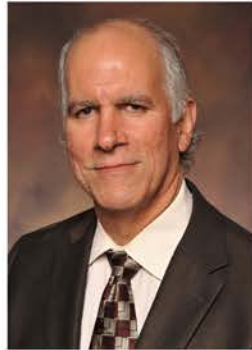
Dr. Grand received his medical degree from Yale University. He completed his ophthalmology residency at Washington University School of Medicine in St. Louis and completed a vitreoretinal fellowship with Retina Consultants at Washington University. Dr. Grand is certified by the American Board of Ophthalmology.



OUR PHYSICIANS ▶

Daniel P. Joseph, MD, PhD

Dr. Joseph received his medical degree from Wayne State University School of Medicine in Detroit. He completed his ophthalmology residency at Johns Hopkins University Wilmer Eye Institute and a vitreoretinal fellowship with Retina Consultants at Washington University School of Medicine in St. Louis. Dr. Joseph is certified by the American Board of Ophthalmology.



Gaurav K. Shah, MD

Dr. Shah received his medical degree from the University of Illinois College of Medicine, Chicago. He completed his ophthalmology residency at the University of Minnesota and a vitreoretinal fellowship at Wills Eye Hospital in Philadelphia. Dr. Shah is certified by the American Board of Ophthalmology.



Thomas K. Krummenacher, MD

Dr. Krummenacher received his medical degree from the St. Louis University School of Medicine. He completed his ophthalmology residency at St. Louis University and a vitreoretinal fellowship at the University of Iowa, Iowa City. Dr. Krummenacher is certified by the American Board of Ophthalmology.



Bradley T. Smith, MD

Dr. Smith received his medical degree from the University of Alabama School of Medicine, Birmingham. He completed his ophthalmology residency at the Wills Eye Institute and a vitreoretinal fellowship at the Barnes Retina Institute at Washington University School of Medicine in St. Louis. Dr. Smith is certified by the American Board of Ophthalmology.



Richard J. Rothman, MD

Dr. Rothman received his medical degree from Pennsylvania State University. He completed his ophthalmology residency at the University of Pittsburgh Eye and Ear Institute and a vitreoretinal fellowship at Rush Presbyterian-St. Luke's Medical Center and Ingalls Hospital in Chicago. Dr. Rothman is certified by the American Board of Ophthalmology.



Matthew A. Thomas, MD

Dr. Thomas received his medical degree from Harvard Medical School. He completed his ophthalmology residency at the University of Miami Bascom Palmer Eye Institute and a vitreoretinal fellowship at the Medical College of Wisconsin in Milwaukee. Dr. Thomas is certified by the American Board of Ophthalmology.



OUR OFFICES ▶

Additional Missouri and Illinois locations are available

Clayton Office

17 The Boulevard (2nd Floor)
Richmond Heights, MO 63117

From Hwy. 40 or I-170:
Exit on South Brentwood Blvd. The parking garage is east of The Boulevard and accessible from both the Galleria Parkway and Darst Court. Our office is located across the street on the 2nd Floor.



St. Peters Office

5770 Mexico Road, Suite D
St. Peters, MO 63376

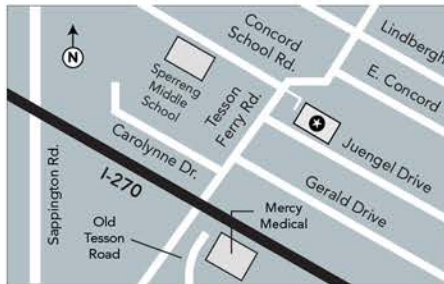
From I-70:
Exit at Cave Springs and go south. Turn right on Mexico Road and proceed for two miles. Go past St. Peters Center Blvd. and make the first right after Executive Drive. The building is located at the rear of the parking lot.



South County Office

12106 Tesson Ferry Road
St. Louis, MO 63128

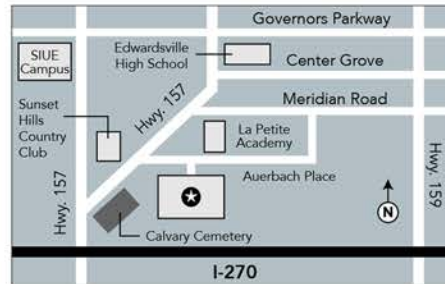
From I-270:
Exit northbound on Tesson Ferry Road/MO-21. Stay on Tesson Ferry Road for approximately 1/2 mile to the first stop light. Turn right into the parking lot.



Glen Carbon Office

5 Country Club Executive Park
Glen Carbon, IL 62034

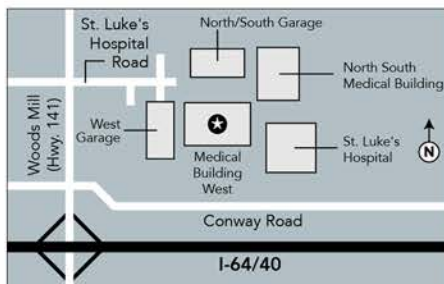
From I-270:
Take IL-157 north towards Edwardsville. Follow 157 for approximately two miles to the first stoplight. Turn right at the signal on Auerbach Place. Make an immediate right. The building is located in the rear of the parking lot.



St. Luke's Hospital Office (West)

226 S. Woods Mill Road, Suite 50W
Chesterfield, MO 63107

From Hwy. 40:
Exit north at Woods Mill Road/141. Make the first right past Conway Rd. Take the second right into the West Garage.



Mount Vernon Office

1009 S. 42nd Street
Mt. Vernon, IL 62864

From St. Louis:
Take 64 E to Highway 15 E (Broadway). Turn right on S. 42nd St. The office is about one mile south of Broadway.

From Evansville:
Take 64 W to 57 N to 15 E. Turn right on S. 42nd St. The office is about one mile south of Broadway.



APPOINTMENTS ▶

To schedule an appointment or to find the office nearest to you, please call: 314-367-1181 or 800-888-0011.



INTRODUCING ▶

The Retina Institute is pleased to announce that **Sabin Dang, MD** will be joining the practice in August 2017.



SPECIAL TESTING ▶

Sometimes your physician may request color photographs of the back of your eye be taken, or an ocular coherence tomography (OCT) be performed.



An OCT scans the back of your eye with light. It helps the doctor see the different layers of the retina. Additionally, fluorescein angiography (FA) may be necessary to assist in establishing or confirming a diagnosis. An FA requires that you be given an intravenous (IV) injection of dye in the arm or hand. No x-rays are involved.

Other tests, including ultrasound, potential acuity meter (PAM) measurements, electroretinography (ERG), visual evoked potential (VEP) and visual fields will be performed if your doctor believes they are necessary. These tests are used to assess visual function, locate problem areas and document the amount of visual loss you are experiencing.

FEES & PAYMENT POLICY ▶

It is the policy of The Retina Institute that either an office visit co-payment or a down payment of services be made at the time of service.

We accept MasterCard, Visa, Discover, American Express and check. Please note we not longer accept cash. You may pay your bill online by clicking the "Pay My Bill" link on the home page of our website. The web address is: www.tri-stl.com. You can also pay your bill at any of our service locations.

If you are a member of an HMO, it is your responsibility to obtain the authorization from your primary care physician. If you are a member of a PPO, we will request co-payment at the time of service.

Should you have questions or require assistance with your account, please contact our Patient Accounts Department at (314) 367-1181 or (800) 888-0011 extension 2296. Our department hours are Monday through Friday, 8:30 am - 4:30 pm. Our billing email address is: statements@rc-stl.com.

PATIENT INFORMATION ▶

The physicians and staff of The Retina Institute strive to give you the best care possible.

When planning for your appointment, please bring the following:

- Sunglasses
- A list and/or actual containers of all medicines you currently take, prescription and over-the-counter
- Your health insurance card(s) and your co-pay or down payment, if required
- Picture identification such as a driver's license
- A current address and phone number for your medical doctor and eye doctor
- Address and phone number of your pharmacy
- Authorization or referral from your primary care physician, if required. **(If necessary, please arrange for a referral with your HMO primary care physician prior to the date of the appointment.)**

The referral may be called in to (314) 367-1181 extension 2021, between 8:30 am - 4:30 pm. It can also be faxed to (314) 968-5117, at least 24 hours before the appointment.

- If you do not have medical insurance please bring a minimum down payment of \$300.00.
- Please note: We not longer accept cash payments.
 - ▶ Please advise the receptionist if you are currently residing in a Skilled Nursing Facility (Nursing Home).

CORRESPONDENCE ▶

For more information, please contact:

THE RETINA INSTITUTE
(*ADMINISTRATIVE OFFICE - ONLY!)
1600 Brentwood Blvd., Suite 800
St. Louis, MO 63144-1317
(314) 367-1181 or (800) 888-0011
Fax: (314) 968-5117
tri-stl.com

